



MSA LIVE

Call for Projects!

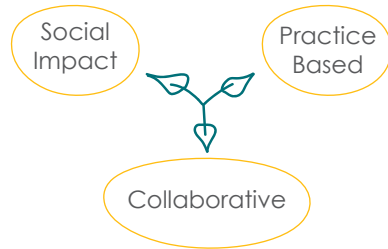
MANCHESTER SCHOOL
OF ARCHITECTURE

WHAT IS MSA LIVE?

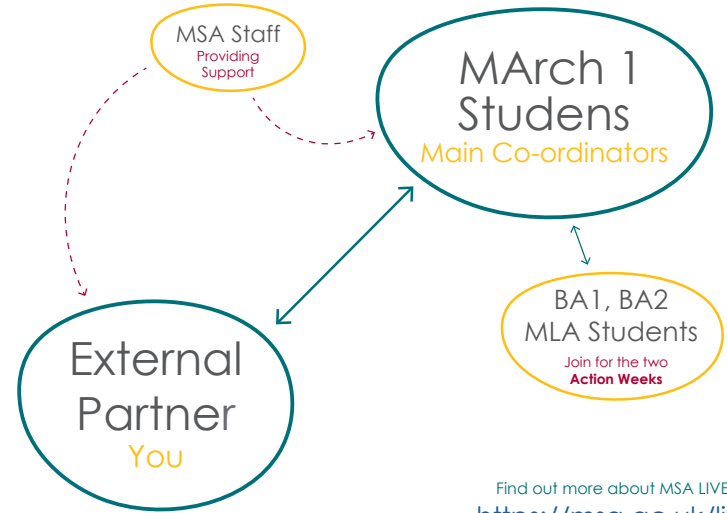


MSA LIVE is an annual programme run by the Manchester School of Architecture. The key focus is on **social impact** and **collaboration**. If you have a project and think it has an appropriate agenda, we could work together.

Please take a look through this guide to find out more.



Every year Masters of Architecture students form a temporary 'student practice' to work on projects with external partners. This improves their skills in practice and project management and could provide you with a young fresh team of dedicated students to bring something new to your ambitions.



Find out more about MSA LIVE at
<https://msa.ac.uk/live/>



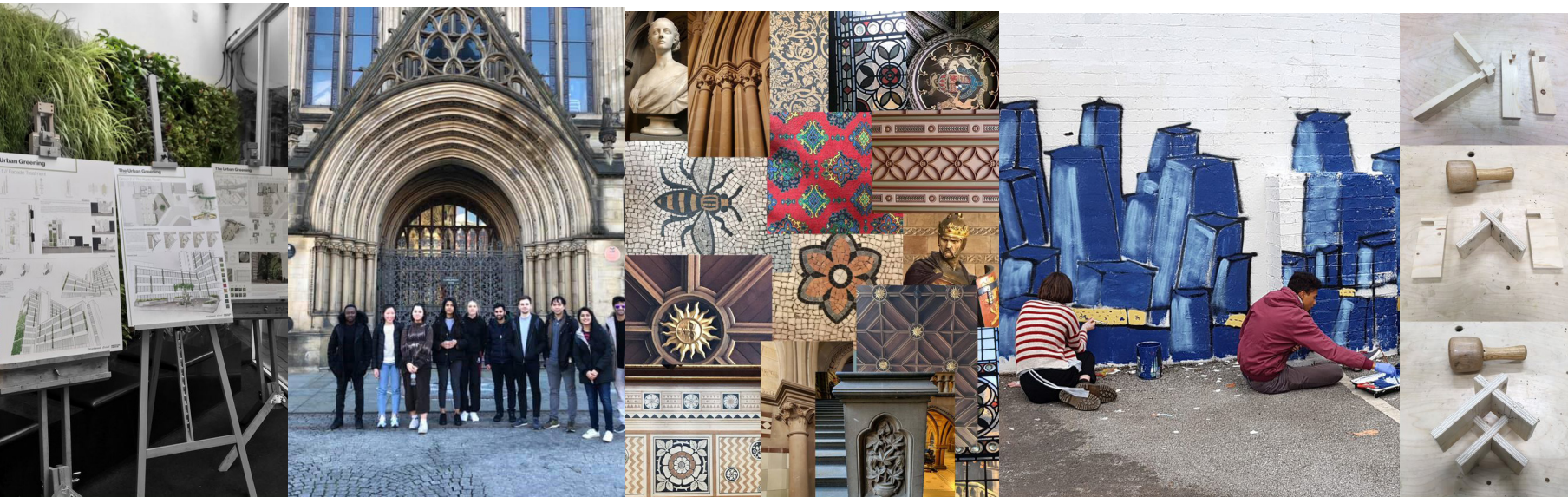
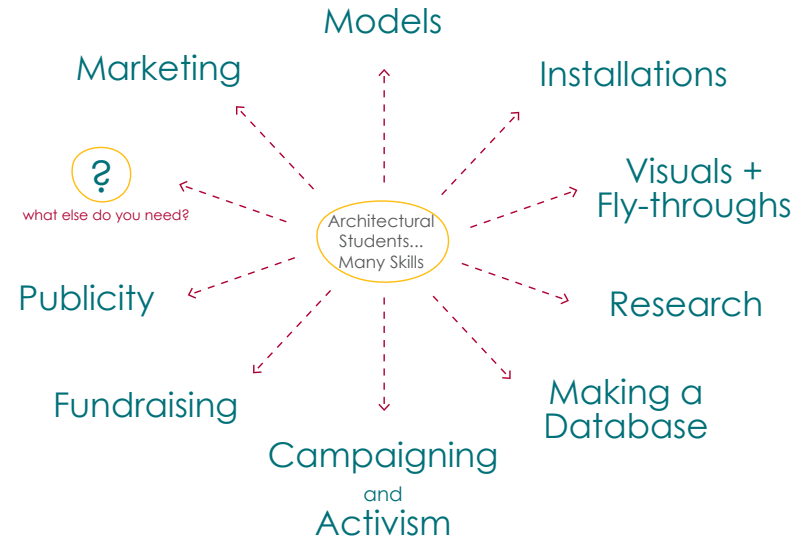
WHY GET INVOLVED?

Our students are all talented and highly skilled and will bring a brand new perspective to anything you are trying to achieve. You don't have to know exactly what you want to do from day one either, you can work together with our students to establish your agenda and outline the projects aspirations and outputs.

Architecture students can do more than design and draw buildings. See our suggestions here, but we are creative, inventive and can turn our skills to any challenge.

Don't miss
out, get
involved
today!!

What does your project need?

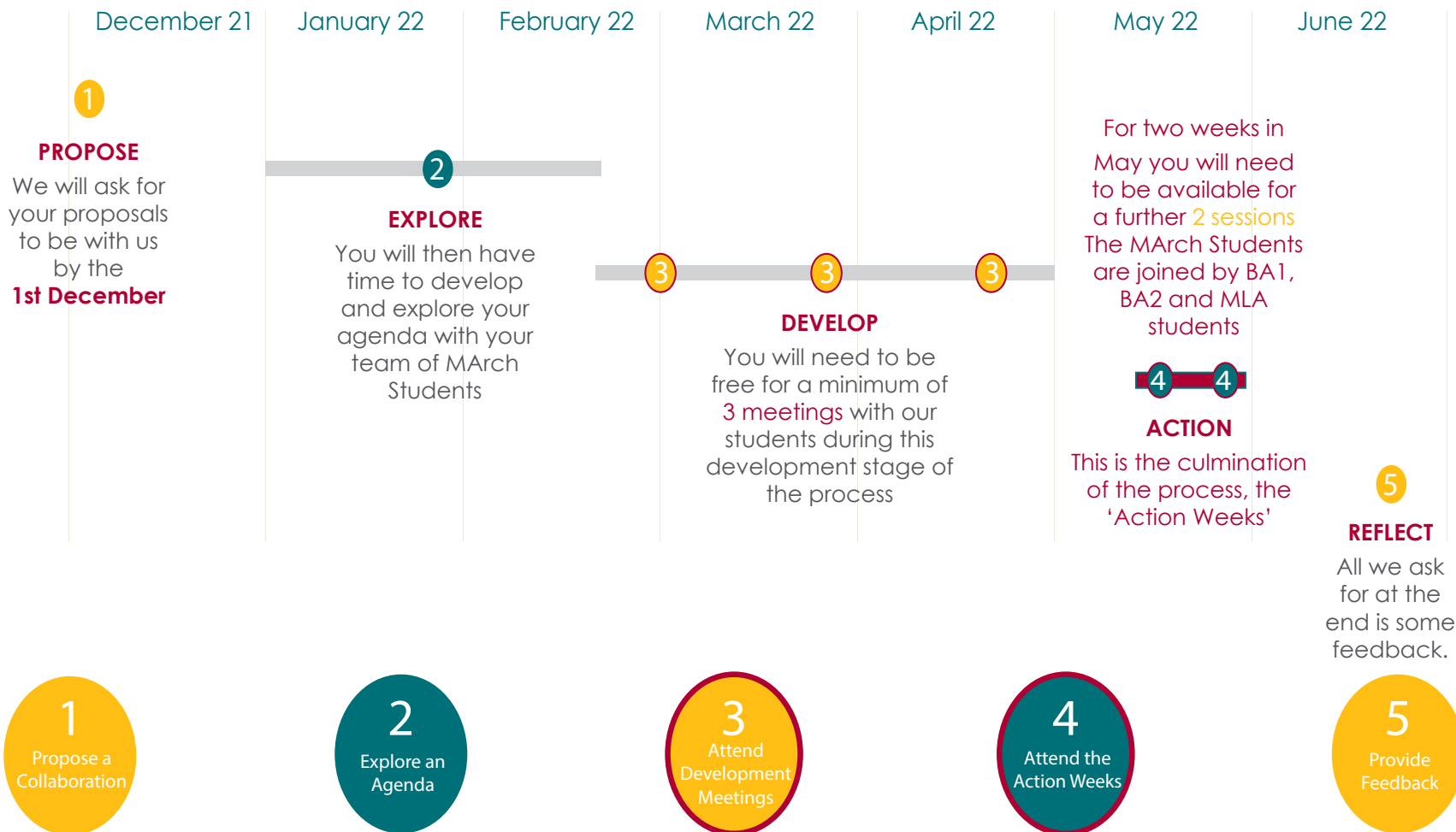


PROJECT CRITERIA SUGGESTIONS

as long as your project has a 'social impact' this is what matters!



TIMETABLE



SEQUENCE OF INVOLVEMENT

SUGGESTED AGENDAS

based on the [United Nations 17 Sustainable Goals](#) [\[click to learn more\]](#)

1 NO POVERTY

2 ZERO HUNGER

3 GOOD HEALTH AND WELLBEING

4 QUALITY EDUCATION

5 GENDER EQUALITY

6 CLEAN WATER AND SANITATION

7 AFFORDABLE AND CLEAN ENERGY

8 DECENT WORK AND ECONOMIC GRWOTH

9

INDUSTRY, INNOVATION AND INFRASTRUCTUER

10 REDUCED INEQUALITIES

11 SUSTAINABLE CITIES AND COMMUNITIES

12 RESPONSIBLE CONSUTION AND PRODUCTION

13 CLIMATE ACTION

14 LIFE BELOW WATER

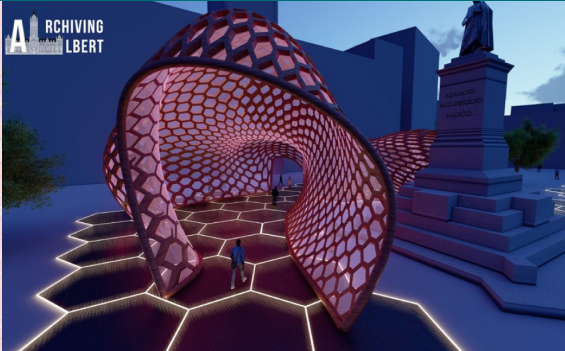
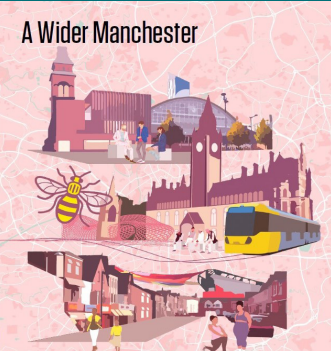
15 LIFE ON LAND

16 PEACE JUSTICE AND STRONG INSTITUTIONS

17 PARTNERSHIPS FOR THE GOALS

PREVIOUS PROJECTS

A Wider Manchester



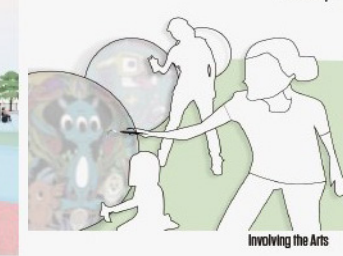
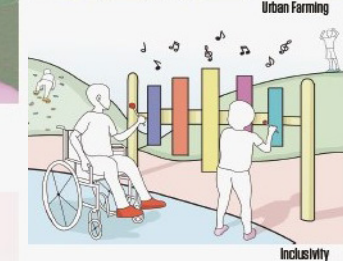
ARCHIVING ALBERT

As part of Manchester's Our Town Hall restoration project, MSA and Lendlease created an accessible digital archive of the Town Hall and Albert Square's collective heritage. The intention was to seek revive and reintroduce Manchester's 'hidden' historical artefacts to the wider community by connecting them with the 'story' of the Town Hall and Albert Square.



THE BLUELINE

Students worked with Urban Splash and Manchester City Council on The Manchester Blueline. Which seeks to act as a central spine that connects, supports and enhances the 3 districts of Salford, Trafford and Manchester City Centre through a shared relationship with the River Irwell. Currently the three neighbouring areas are strongly divided by the river which has become an obstacle for residents and tourists. The Blueline has been designed with the aim to stitch these three disconnected districts back together, resulting in an improved riverside experience for all.



PLAY BY THE BEECH

Friends of Beech Road Park is a community-led group which challenged the team to reimagine the parks play area. Building on the team's personal experiences from play areas with regard to discussions on nostalgia, inclusivity, sustainability, safety, materiality and technology, this team reflected on interpretations of play which may refer to the act of engaging, applying, or exercising and used those ideas as a design tool towards creating options for a play area for Beech Road Park's community. This fed into four different schemes, each centered around a different theme; terrain, sensory, community-built pavilion and modularity.

Over the summer the Friends of Beech Road committee made an application to the "Parks in Partnership" fund and were successful in securing **£26,947** to make the students vision a reality!

See more projects here - <https://live.msa.ac.uk/2021/publications/>

WHAT TO DO NEXT!

Complete our Google Form

scan the QR or follow link:
<https://forms.gle/8Lqi3uJe6JxVYHif8>



You will be asked for your;

Project Agenda 100 words

Your agenda is the issue/ need/ subject you want the LIVE team to focus on. In other words, what should the project do? If you don't have a specific agenda, students might contact you to discuss ideas at the start of the project.

Project Idea 200 words

This will be shared with students for them to choose a project - so make it as appealing and clear as possible!

You will also be asked how your project will provide

Social Impact 300 words



Meet our students
and do

Something Great !

Deadline Wednesday 1st December

Contact us - msalive@mmu.ac.uk

FROM THE CITY OF THE CITY FOR THE CITY AND BEYOND

MANCHESTER
1824

The University of Manchester



Manchester
Metropolitan
University