

Group 06 // Wilbraham Avenue

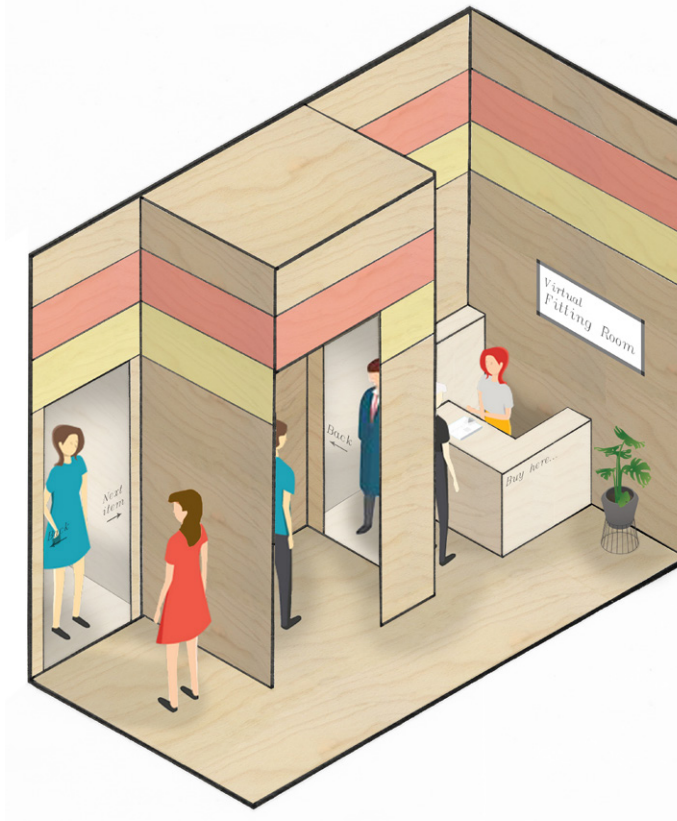
Our proposal opposes the unnecessary construction of new structures as a method of rejuvenating the High Street, instead focusing on the prime component, the public realm in-between. We suggest making use of existing undervalued commodities by reoccupying empty properties with both commercial and residential activity to remove the unnecessary boundaries between High Street and housing. Our initial move would be the pedestrianisation of Chorlton High Street which will allow the public realm between shops to be inhabited in new and exciting ways. We suggest the development of interactive furniture, bicycle stands and temporary pavilions that react to the local demographic's needs.



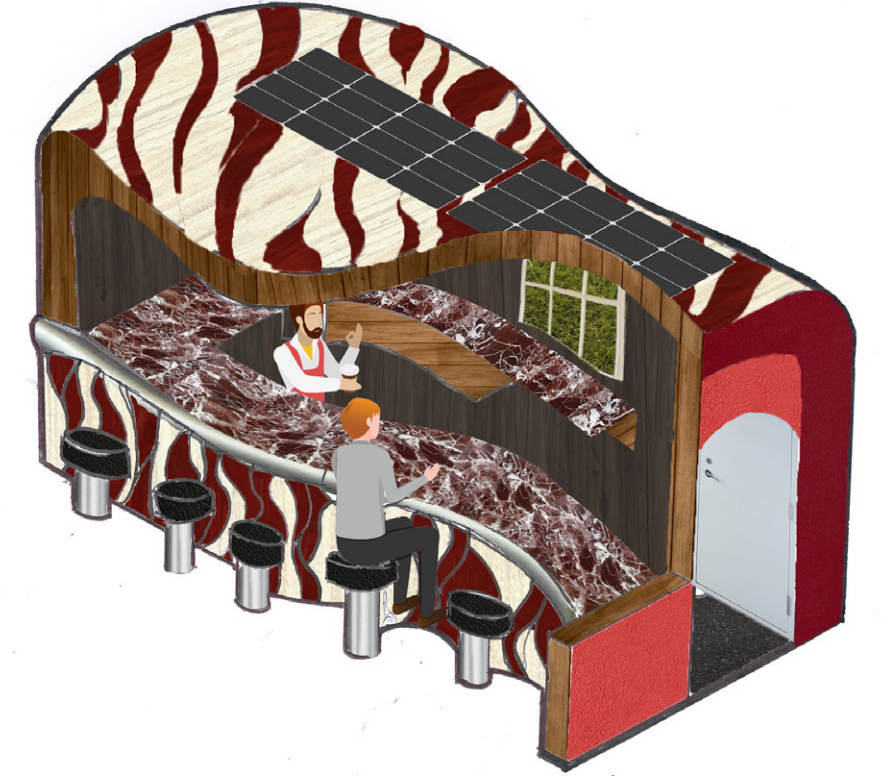
Seating Area + Art Installation



Interactive Seating Area



AR Tech in Shopping Experience
Virtual Fitting Room



Cafe Pavilion

Developing a new Streetscape



Preliminary Ideas of Pavilions



Bicycle lanes and bicycle parking areas.

Interactive floor; reacts as you walk

Green space areas and seating areas

Movable modular pop-up shop areas